

Digital DRIVE for Brushless motors SMD Series

Configure SMD EtherCAT with MPC

Read manual before installing and follow
all instructions with this icon:



SMD -MPC configuration-2103-EN

Table of contents

| | | |
|-----|---------------------|---|
| I. | INTRODUCTION | 1 |
| II. | CONFIGURATION | 1 |

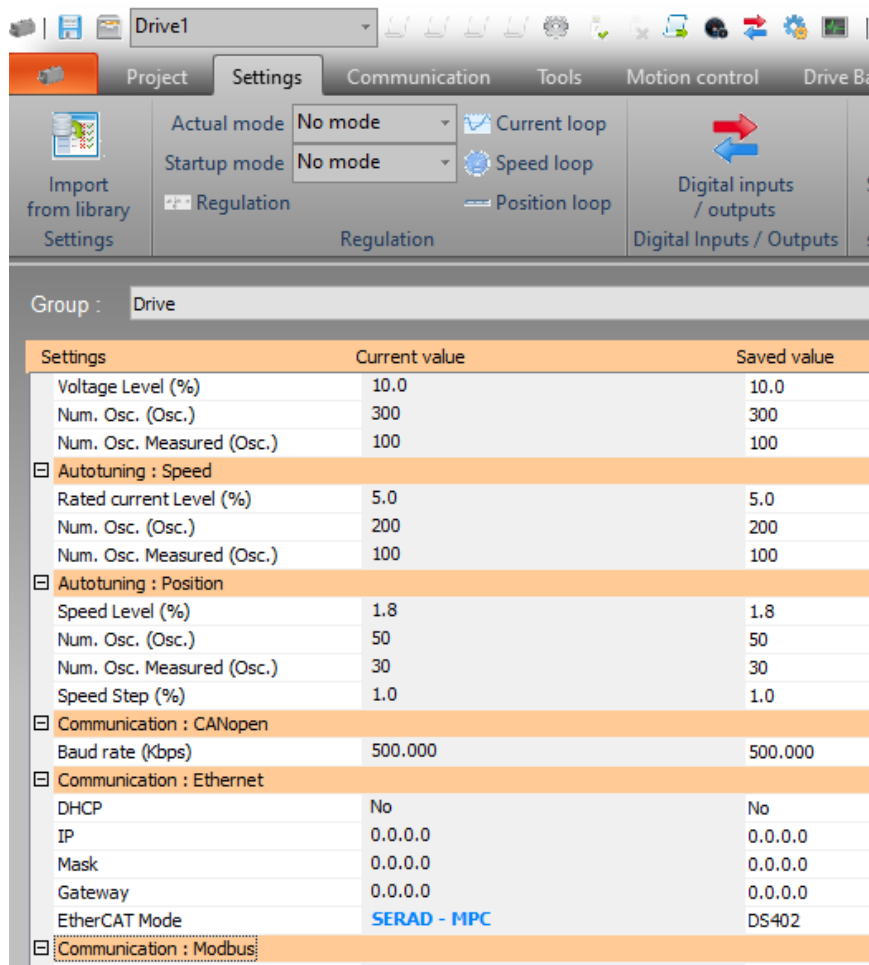
| | | | |
|-----------------|------------------|-------------|---------------------|
| | | | |
| R2103 | AG (SERAD) | 22/01/2021 | First edition |
| Revision | Edited by | Date | Modification |

I. Introduction

The SMD EtherCAT is DS402 compatible (CanOpen over EtherCAT). The Serad MPC EtherCAT is not DS402 compatible. Then the SMD must be configured to work specifically with the MPC on the specific EtherCAT.

II. Configuration

On the right part of the windows, goes to the parameters categories “Communication: Ethernet”. Choose “SERAD – MPC” instead of “DS402”. Restart the drive.



That all!